

A machine with unique maneuverability as well as ideal cornering characteristics.

Hydraulic drive with wheel motor for infinitely variable speed regulation. Mechanical parking brake.

Two rear wheels, one driven front wheel which can be turned to the right and left by almost 90° via steering. This allows an extremely small turning circle of 3.7 m (around stationary right or left rear wheel). No dangerous acceleration on the external outside of the curve.

Optimal visibility conditions during marking operation.

Perfect loading facility.

Line widths 10 up to 30 cm.

Engine: 2-cylinder 690 cm³, Honda gasoline, air-cooled, 14,5 kW at 3 200 rpm

Air output: up to 670 l/min at 6,0 bar (1-cyl. compressor)

Turning radius: 3,7 m (equipment dependant).

Material container capacity: 100 up to 120 l

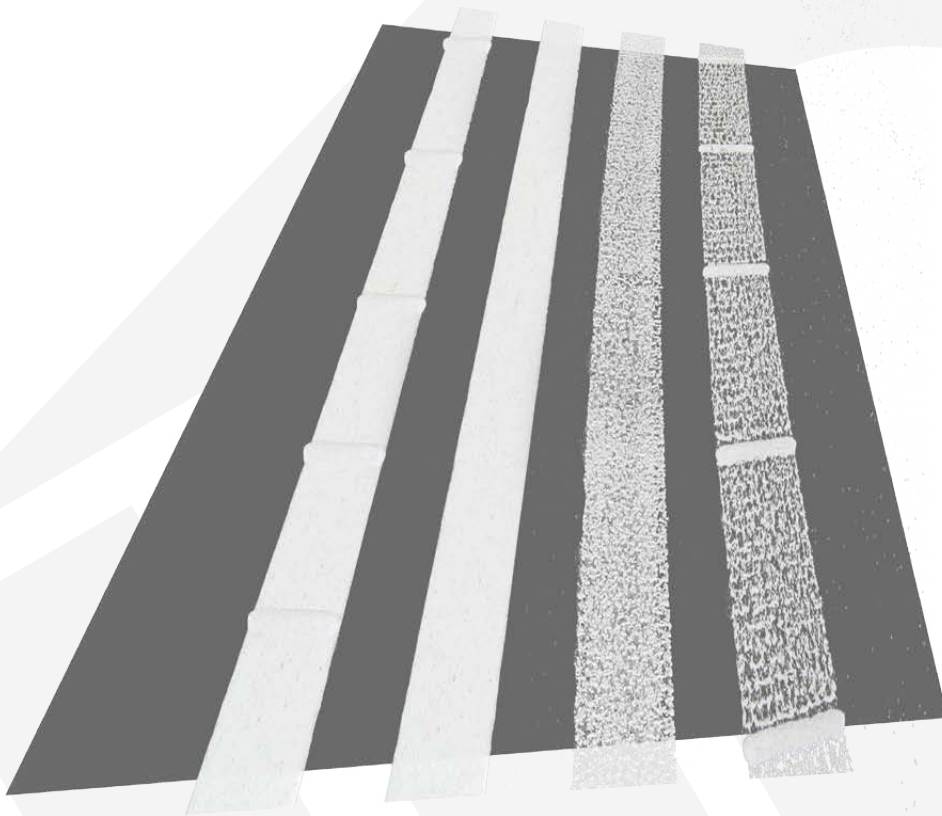
Pressurised glass beads container: 41 l (max. 1 bar)

Dimensions (length x width x height in mm): 2 560 - 1 100 x 1 350 (equipment dependant)

Weight, equipped: cca. 800 / 950 kg



Benchmark in Quality | Innovation | Product Variety | Services | Consulting



Two component cold plastic system developed for structural and flat marking with variable line widths up to 30 cm.

Galvanized steel construction.

Needle cylinder, pneumatic controlled.

2 pcs of dosing divider for 12 cm & 25 cm structural marking line.

Air-turbo control unit for material output.

Container for mixture of glass beads and peroxide with dosing valve.

Hydraulically driven mixer, directly on divider.

Electromagnetic valve for opening and closing divider.

Service unit for air-cooled engine.

Special hose with coupling for material container and safety dosing.

Valve for cold plastic component.

Vertical electrical heaver for the marking unit.

Benchmark in Quality | Innovation | Product Variety | Services | Consulting